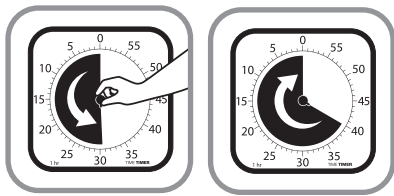




Make every moment count.

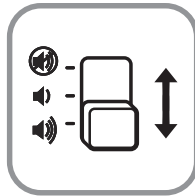
## HOW TO USE THE TIME TIMER MAX

The Time Timer MAX is the ultimate in size and flexibility. It's a whopping 44 cm by 44 cm so it can be seen in larger spaces. It is also eight timers in one — with customizable durations and changeable timer faces, the MAX can countdown from five minutes to 24 hours. The Time Timer MAX is perfect for keeping any activity on time, even if it literally lasts all day!



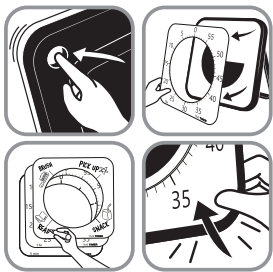
### TO SET THE TIMER:

Simply turn center knob counterclockwise to set timer. Disk disappears clockwise. When the disk is gone, time is up.



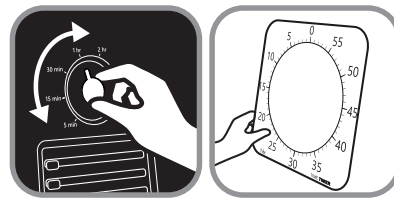
### OPTIONAL ALERT:

Use the red switch on the back of the Timer to choose your volume settings (high, low or no sound).



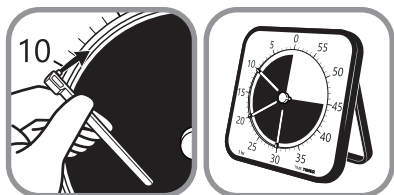
### TO CHANGE THE TIMER FACE:

Insert your finger through the hole on the back of MAX and push out all three two-sided timer faces. Place the selected timer face (or dry erase face) on the top and then snap them back in place, one face at a time.



### TO CHOOSE A DIFFERENT DURATION:

Turn the time duration dial on the back of the timer to **match** the total length of time represented on the selected timer face or written on the dry erase face.



### TO USE THE SET MARKERS:

Create time blocks on any face by snapping set markers in the grooves between the red disk and numbers. The MAX comes with three colored set markers, that can be stored on the back of the timer.



### 4 DISPLAY OPTIONS:

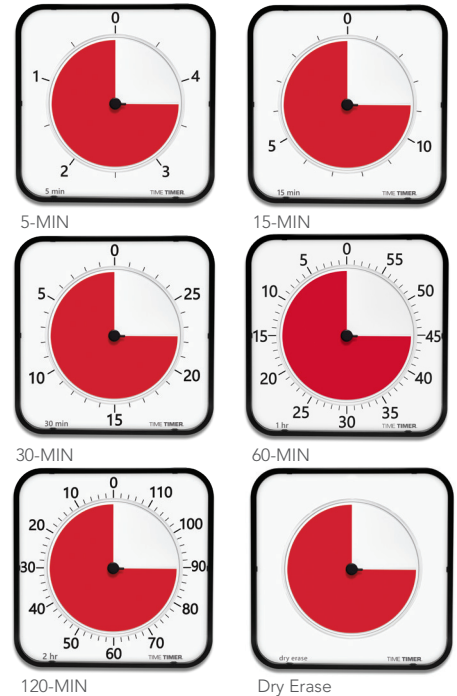
Display the MAX with its built in kickstand, by flipping the kickstand to hang from a whiteboard hook or map rail, using the included bracket wall mount, or hang from a screw in the wall.



### THE TIME TIMER MAX INCLUDES:

- 1 timer with 8 duration settings
- 3 two-sided timer faces (5/15 min, 30 min/1 hr, 2 hr/dry erase face)
- 3 set markers
- 1 bracket mount

### INCLUDED FACES:



### ADDITIONAL FACES - SOLD SEPARATELY:

